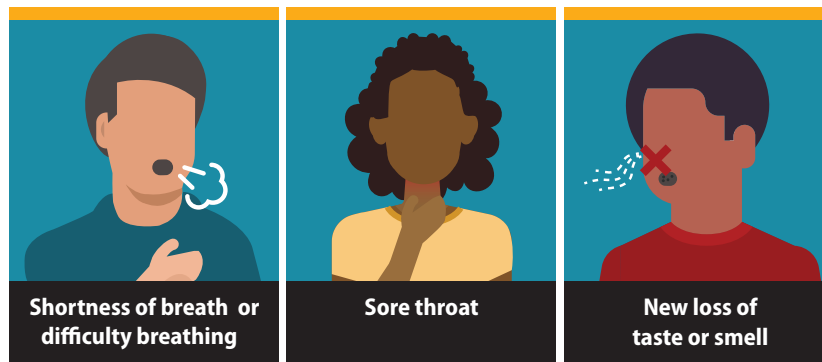
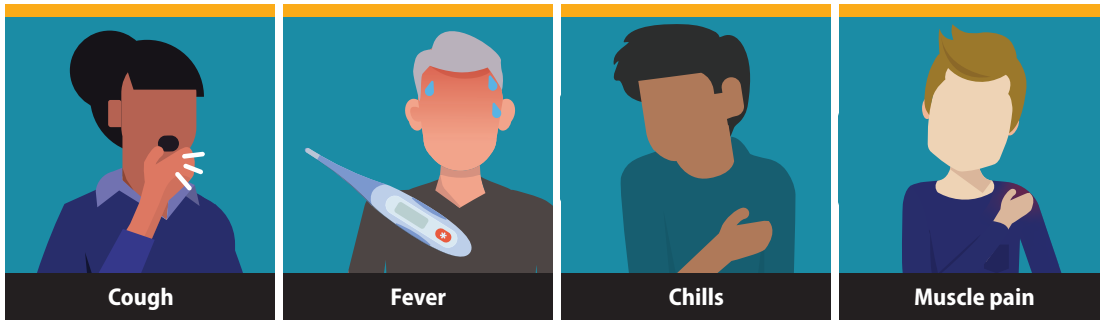


Do Your Part — Make #NMSUReady

Monitor Your Health Every Day



Symptoms can range from mild to severe illness, and appear 2-14 days after you are exposed to the virus that causes COVID-19.

Information and graphics courtesy of the CDC.

The symptoms of COVID-19 also can include:

- Fatigue
- Headache
- Congestion or runny nose
- Nausea, vomiting or diarrhea



BE BOLD. Shape the Future.
New Mexico State University