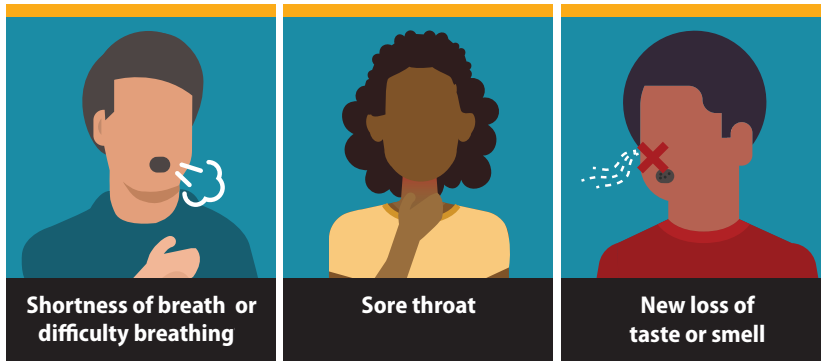
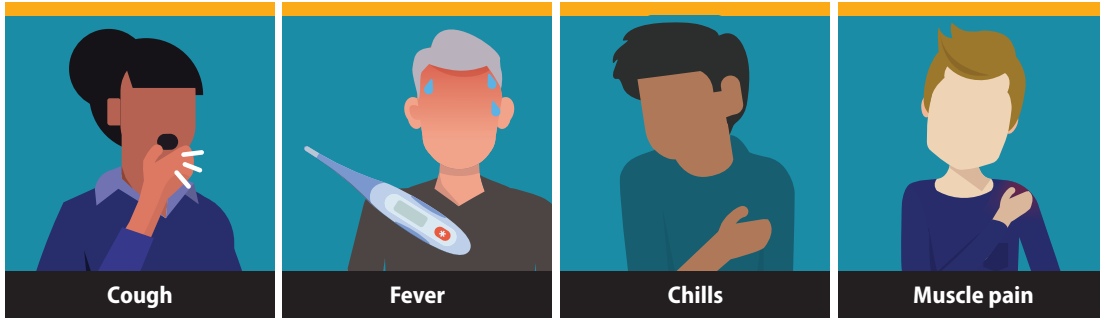


# Do Your Part — Make #NMSUReady

## Monitor Your Health Every Day



Information and graphics courtesy of the CDC.

The symptoms of COVID-19 also can include:

- Fatigue
- Headache
- Congestion or runny nose
- Nausea, vomiting or diarrhea

Symptoms can range from mild to severe illness, and appear 2-14 days after you are exposed to the virus that causes COVID-19.



**BE BOLD.** Shape the Future.  
**New Mexico State University**